

Imaging Services now available at our John Muir Health, Orinda location

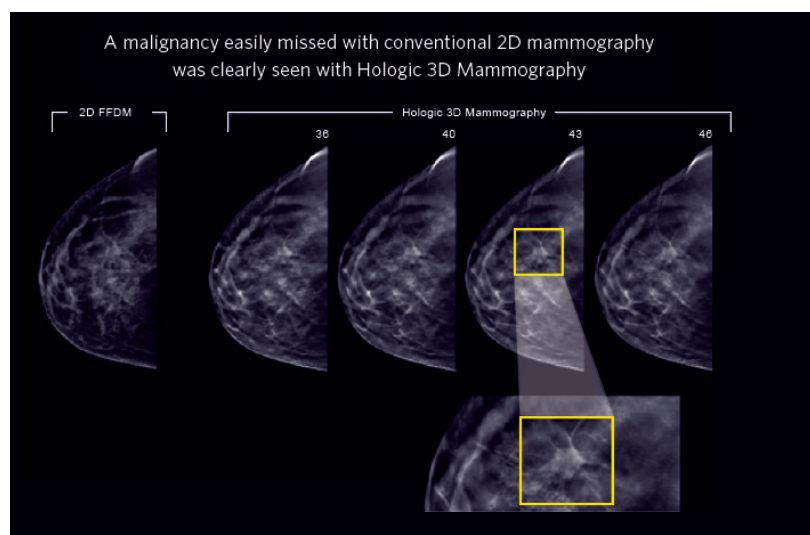
Services include:

- X-Ray
- Ultrasound
- 3D Tomosynthesis Mammography

3D Tomosynthesis – breakthrough technology for detecting breast cancer in its earliest stages

2D mammography typically takes two X-rays of each breast, one from the front and one from the side. The breast is stretched, compressed, and held between two glass plates during the X-ray. This compression may produce images with overlapping breast tissue, and can sometimes hide a breast cancer.

Whereas 2D mammography creates just a single composite picture of each breast, 3D mammography takes multiple pictures of each breast from several angles, in slices. During the imaging session, an X-ray arm moves in an arc around the breast, taking multiple images in a matter of seconds. Fine details are more clearly visible on 3D images and no longer hidden by overlapping tissue.



A comparison of 2D versus 3D images in identifying a malignancy

Online scheduling of mammography services available to patients through their existing MyJohnMuirHealth patient portal.

John Muir Health Orinda Medical Imaging Services

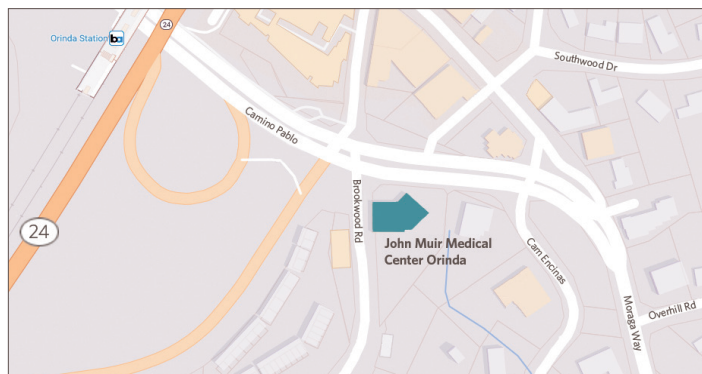
140 Brookwood Road, Suite 100, Orinda, CA 94563

Information: (925) 254-9850

Scheduling: (925) 952-2701

Fax for MD orders (925) 941-4065

Hours: M-F 8:30 am – 5:00 pm



Urgent Care coming to the Orinda location in 2017

