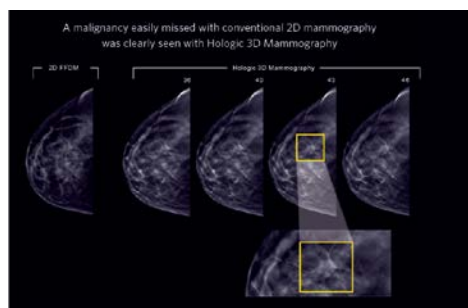


Imaging Services now available at Concord Medical Center

Services include:

- 3-D Tomosynthesis Mammography
- Bone Density
- Computed Tomography (CT or CAT scans)
- Nuclear Medicine
- SPECT-CT
- Ultrasound
- X-ray

3D Tomosynthesis – breakthrough technology for detecting breast cancer in its earliest stages



A comparison of 2D versus 3D images in identifying a malignancy

2D mammography typically takes two X-rays of each breast, one from the front and one from the side. The breast is stretched and compressed during the X-ray. This compression may produce images with overlapping breast tissue, and can sometimes hide a breast cancer.

Whereas 2D mammography creates just a single composite picture of each breast, 3D mammography takes multiple pictures of each breast from several angles, in slices. During the imaging session, an X-ray arm moves in an arc around the breast, taking multiple images in a matter of seconds. Fine details are more clearly visible on 3D images and no longer hidden by overlapping tissue.

Online scheduling of mammography services available to patients through their existing MyJohnMuirHealth patient portal.

John Muir Health, Concord Medical Center Imaging Services

2540 East Street, Concord, CA 94520

Scheduling (925) 952-2701

Fax for MD orders (925) 941-4065

Hours: M-F 8:00 am – 5:30 pm

